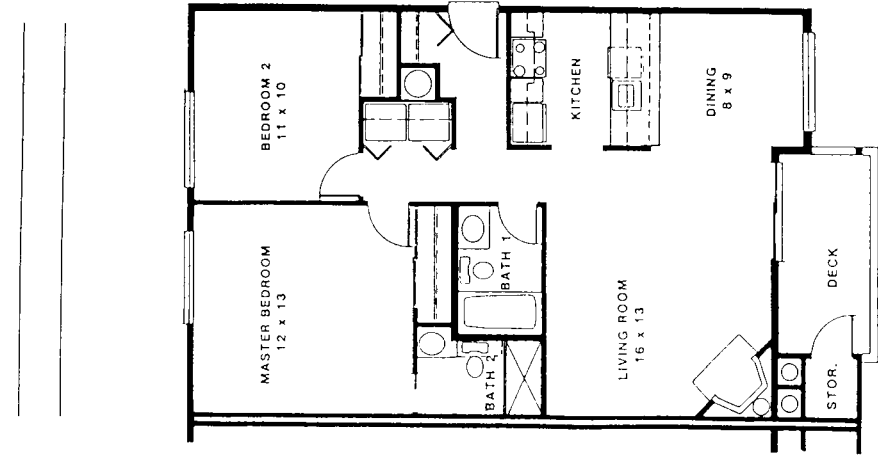


THE BEACHCOMBER

TWO BEDROOM, TWO BATH



904 Sq. Ft.



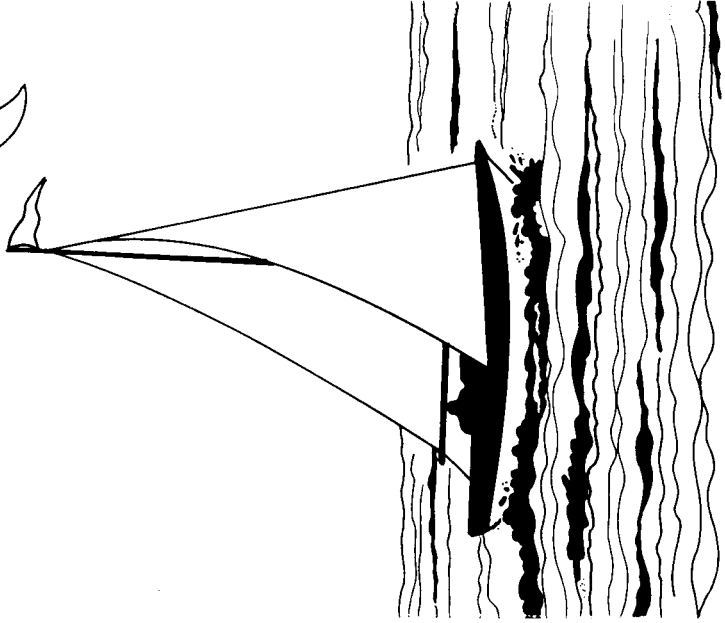
AMENITIES & FEATURES

APARTMENT AMENITIES

- Wood-burning Fireplaces
- All electric Kitchens
- Frost Free Refrigerators
- Self cleaning ovens
- Dishwashers
- Insulators
- Convenient breakfast serving counter
- Mini Blinds
- High Efficiency Water Heaters
- Forced Air Electric Heating
- European Cabinets
- Private Balconies/Patios
- Extra Storage
- Cable TV in all living rooms and bedrooms
- Washer / Dryer full size
- Spacious closets
- Plush carpeting

EXTERIOR AMENITIES

- Tile roofs
- Exclusive, decorator designed clubhouse with facilities for private functions complete with kitchenette and fireside lounge
- Fitness area with exercise equipment
- Lush landscaping complemented with beautiful water-scapes
- Indoor Spa and Sauna
- Outdoor Barbecue area
- Covered Parking
- Tanning Salon
- Four Docks
- Boat Moorage
- Panoramic Views
- Outdoor Pool

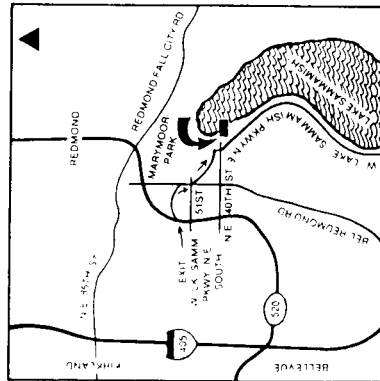


SAMMAMISH



BEACH CLUB

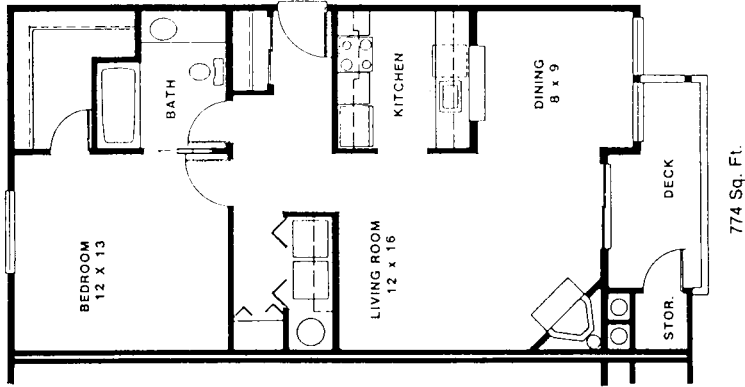
The Location
 Sammamish Beach Club Elegant Apartment Homes offer a first class waterfront lifestyle. Own a piece of the Lake while enjoying a panoramic view of the Cascade Mountain Range. Our four docks provide boat moorage while just minutes away is Marymoor Park with bicycle and jogging trails and tennis courts for the active sport enthusiasts. Sammamish Beach Club is located within the city limits of Redmond, on a busline and easily accessible to Bellevue and Highway 520 to Seattle.



DRIVING DIRECTIONS: From I-405 go east on Highway 520 to the West Lake Sammamish Parkway N.E. Exit. At the signal turn right facing south. Drive 1 mile going thru Signal Hill to continue on West Lake Sammamish Parkway N.E. and toward the Lake on N.E. 40th Street. Turn left to Sammamish Beach Club on the right at the water.

THE DOCK SIDE

ONE BEDROOM, ONE BATH



THE WIND SURFER

TWO BEDROOM, ONE BATH

