

# Largo Vista

apartments

## Features:

Clean, newly painted apartments

Neighborhood courtyard environment

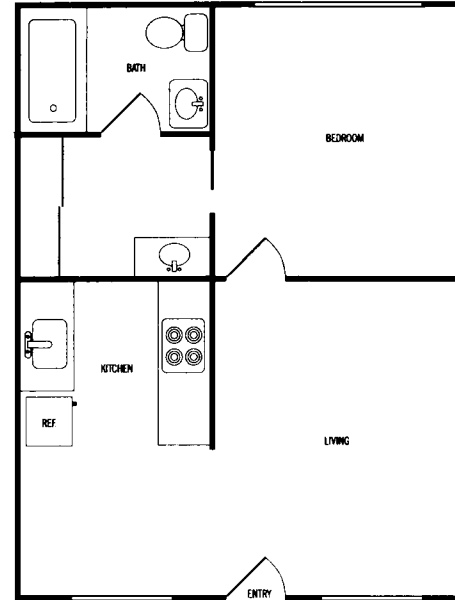
On-site playground with slide & swings

Convenient location, within walking distance to shopping, restaurants, and movie theatre.

On-site laundry facilities

On-Site Management

Only fifteen minutes from downtown Seattle



510 Sq. Ft.

Rent: \_\_\_\_\_

Apt. #: \_\_\_\_\_

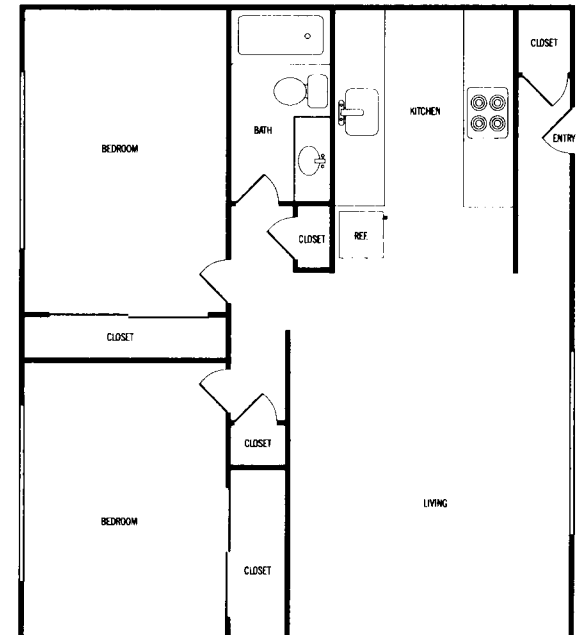
Deposit: \_\_\_\_\_

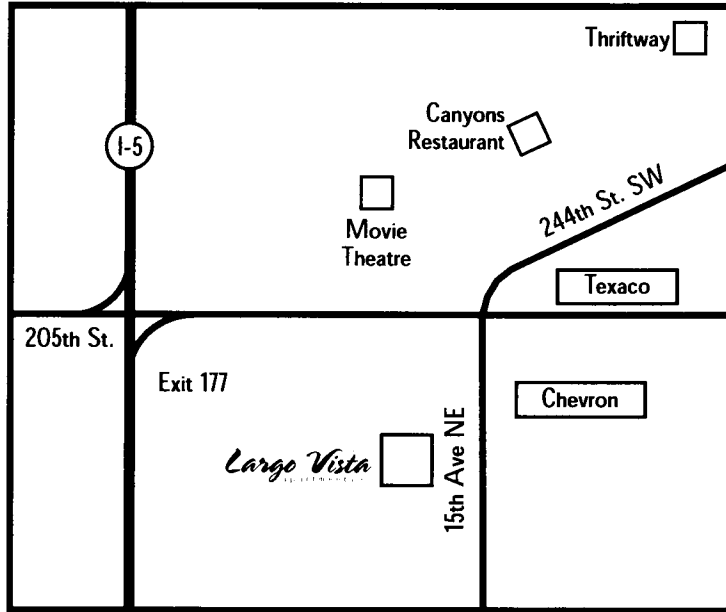
850 Sq. Ft.

Rent: \_\_\_\_\_

Apt. #: \_\_\_\_\_

Deposit: \_\_\_\_\_





# Largo Vista

apartments

*We're easy to find!*

## Directions:

From I-5 (North or South) take Exit 177. Head East on Ballinger Way and take the first right onto 15th Ave NE.

Largo Vista will be the first apartment community on the right.



Apartment Shown By: \_\_\_\_\_

20333 15th Avenue NE • Seattle, Washington 98155

[largovista@graninc.com](mailto:largovista@graninc.com)

(206) 364-6720